



# The Storage Partition Wall System

Partition wall systems for Self Storage and the commercial sector.

## THE BENEFITS FOR YOU

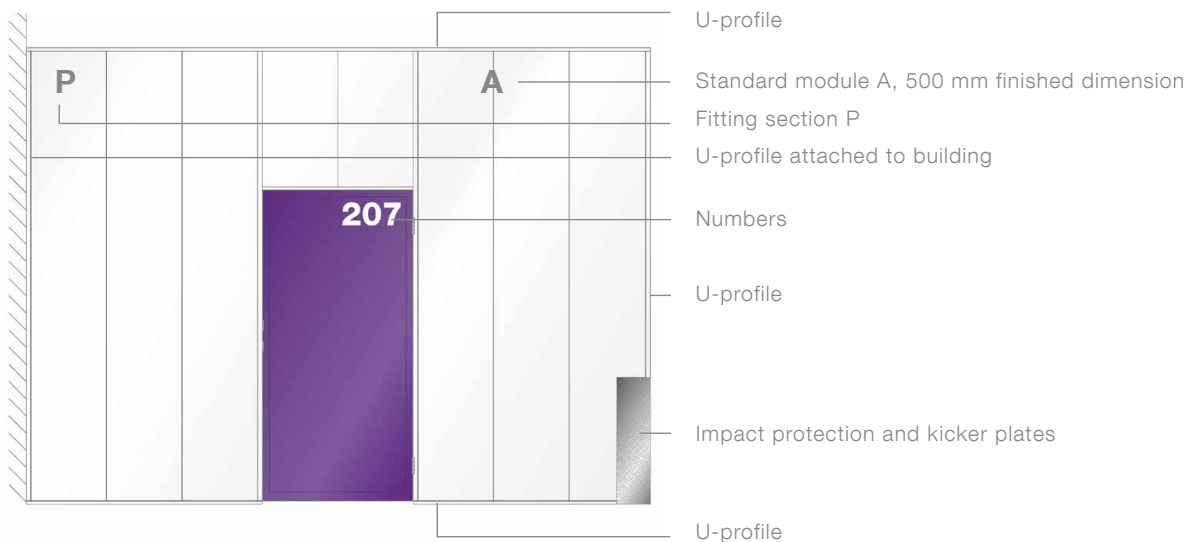
- Extremely cost-effective modular construction.
- Attractive design with bright, light-reflecting surfaces.
- Privacy from prying eyes – 100% opaque material.
- Robust and self-supporting – ceilings and insulations protected from damage.
- Doors are available in all RAL colours.

OUR MODULAR SYSTEMS



## Construction of the modules

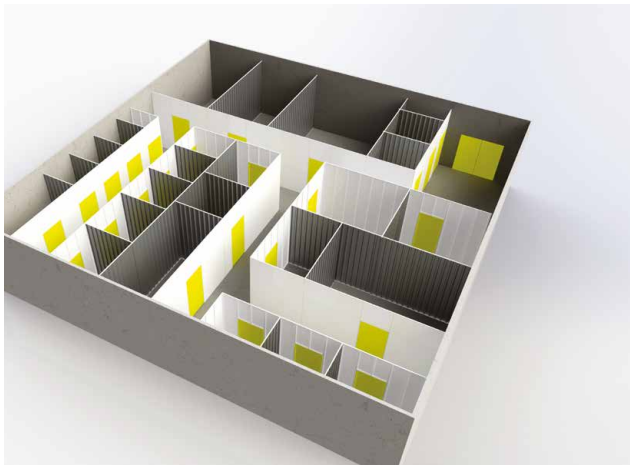
---



Gerhardt Braun's "IG Storage" storage partition wall system consists of white coated solid steel panels (Hallway walls) and galvanised trapezoidal panels (partition walls), as well as solid steel sheet doors.

## Hallway walls

---



White coated 100% steel panels, 0.75 mm thickness, light-reflecting and bent on three sides. The modules are connected to the u-profiles and anchored to the floor and walls of the building. There is also a u-profile attached and bolted to the upper edge of the external wall.

Module width: 500 mm (finished dimension)  
System height: up to 3,000 mm

## Partition walls

---

Galvanised trapezoidal panels 30W-207/0.75 mm thickness, light-reflecting. Fixing identical to hallway walls.

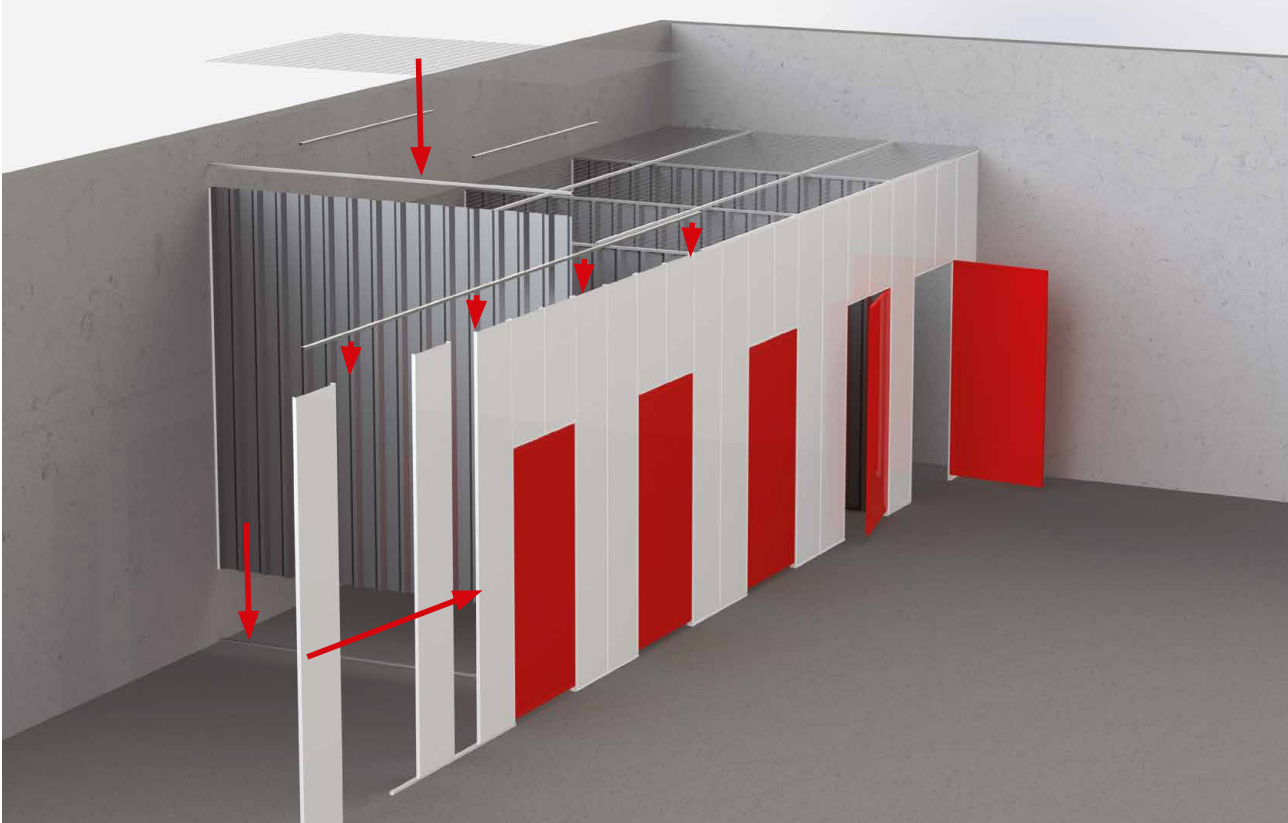
## Swing doors

---

Made of galvanised 100 % steel sheet (0.75 mm) with bent edges and bolted to the inside of a 25/25 mm mitred frame. The standard version features a privacy panel and a stop rail on both sides. Optionally available in any RAL standard colour. Double doors are also available.

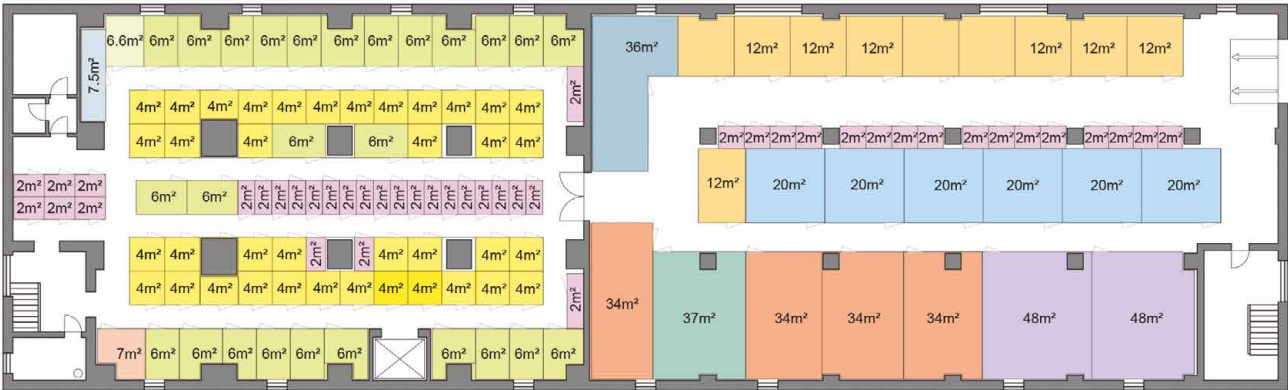
Door widths: standard 950 mm and 1,250 mm  
Door height: 2,100-2,300 mm

# Construction principle



# Design

We can take responsibility for the entire design process including efficient floor plan, on request.



# Accessories



## We offer the following accessories for Self Storage:

- **IMPACT PROTECTION AND KICKER PLATES** ① Made of corrugated aluminium sheet metal, also along corridor walls.
- **NUMBERS** ② We offer high-quality numbers, which can be customised to your own individual design, colour and size (up to 280 mm), to guide people around more easily.
- **CORRIDOR ROOF PANELS** ③ White coated angled panels are available for corridors to conveniently accommodate lighting.
- **LOCKERS** ④ A practical addition, our lockers provide space for up to 12 packing cases. Measuring approx. 1 m<sup>3</sup>, lockers can be located in small recesses to maximise your rentable space. The door is coated in your required RAL colour. The entire locker can be coated or customised to your specific dimensions.

*Brochure is subject to technical changes.*

**Headquarters Germany Bietigheim-Bissingen/**  
Plant Bissingen Fon +49 7142 9700 500  
**Branch/Warehouse Potsdam** Fon +49 331 236912 70  
**Branch/Warehouse Hamburg** Fon +49 40 558 9554 0  
**Plant Hermsdorf (Magdeburg)** Fon +49 39206 680 0  
**Branch Kamen** Fon +49 2307 4383 0  
**Branch Karlsfeld (Munich)** Fon +49 8131 3241 0  
**Branch Leipzig** Fon +49 331236912 85  
**Headquarters Austria Wien** Fon +43 1 5322350 0  
**Branch Salzburg** Fon +43 6225 20708 0  
**Branch Dornbirn** Fon +43 5572 42020  
**Headquarters Switzerland Luzern** Fon +41 41444 2400



**Gerhardt Braun RaumSysteme GmbH & Co. KG**  
Prinz-Eugen-Straße 11  
D-74321 Bietigheim-Bissingen  
Fon +49 7142 9700 500  
Fax +49 7142 9700 29  
info@gerhardtbraun.com

UNSERE MODULAREN SYSTEME



[gerhardtbraun.com](http://gerhardtbraun.com)